

FAROE Marine Research Institute – activities and facilities

Leon Smith, Head of Tech. Dept.



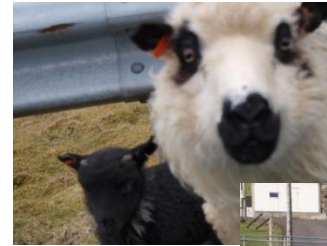
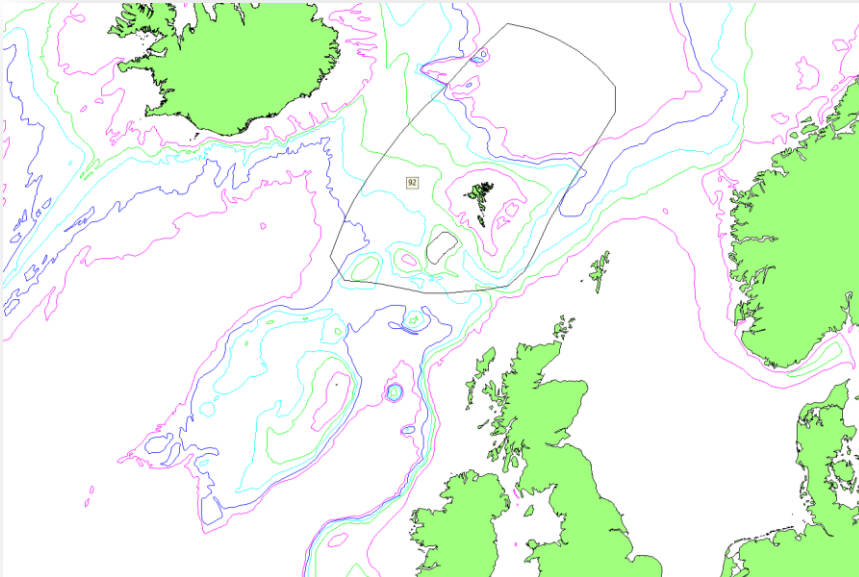
HAVSTOVAN
FAROE MARINE RESEARCH INSTITUTE

Overview

- Faroe Marine Research Institute
- Research vessel Magnus Heinason
- Activities
 - Demersals
 - Hydrography/Environment
 - Pelagics /International cooperation
- Future dreams



Faroe Islands (EEZ)



Self governing province of the Kingdom of Denmark. Not an EU member. And by that own trade/fisheries policies.

Appr 48500 souls
70000 sheeps
TW : 1399 sq. km
EEZ: 260995 sq. km

Faroe Marine Research Institute



- 30 staff (2½ tech.)
- Oceanography
- Geochemistry, plankton, nekton
- Ecosystems
- Seabirds
- Fish biology, stock assessment
- Ecosystem research
- Gear technology
- Advice

Research Vessel



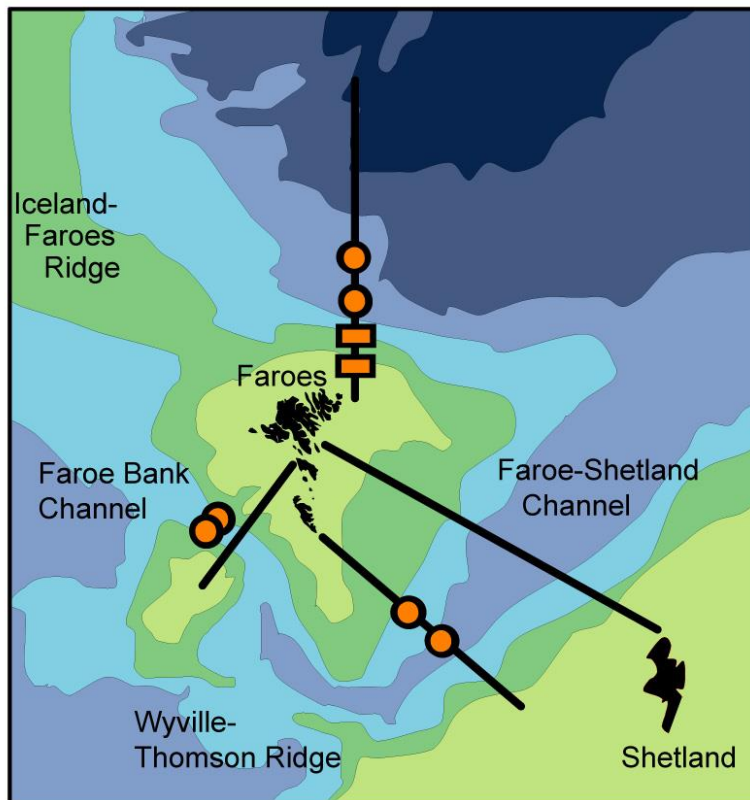
RV Magnus Heinason (1978)

- Length 45.5 m
- 13 crew/5 scientific staff
- Equipment
 - Pelagic and bottom trawls
 - Plankton nets
 - Echosounders EK60(38,(120),200)
 - Sonar
 - CTD with fluorometer
PAR-sensor and O₂-sensor
 - Computer network, etc...



hydrography

Ocean climate monitoring around the Faroe Islands

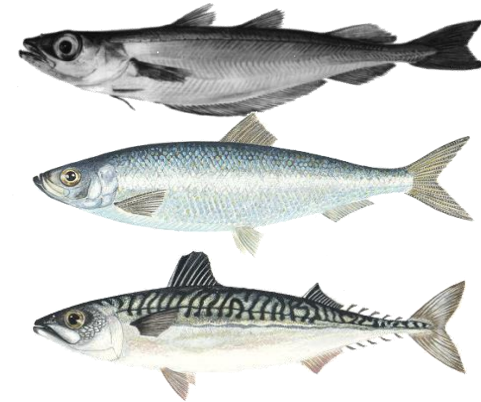
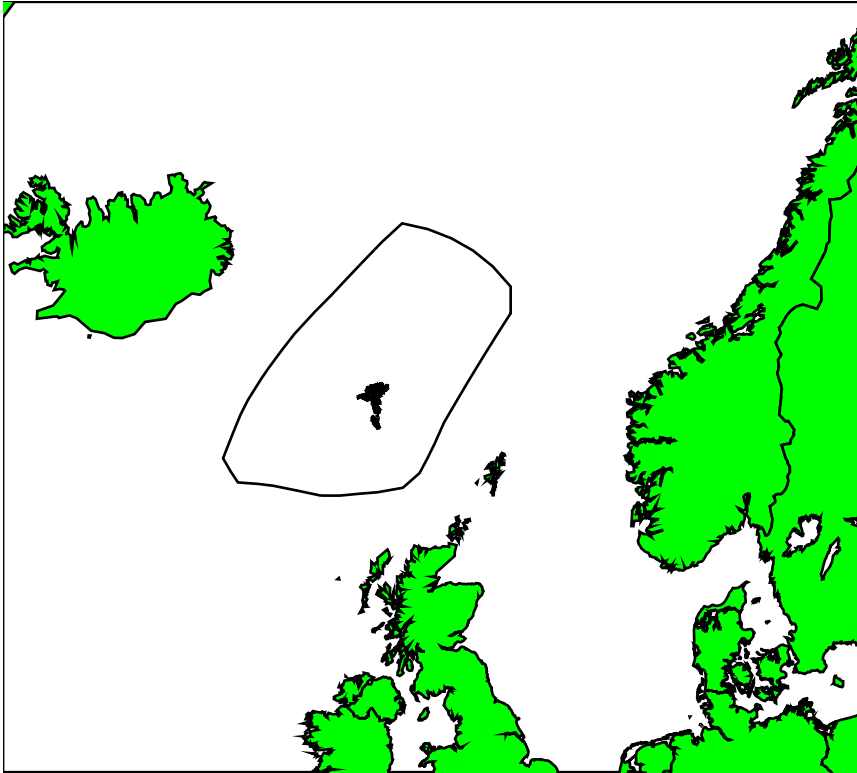


Demersals

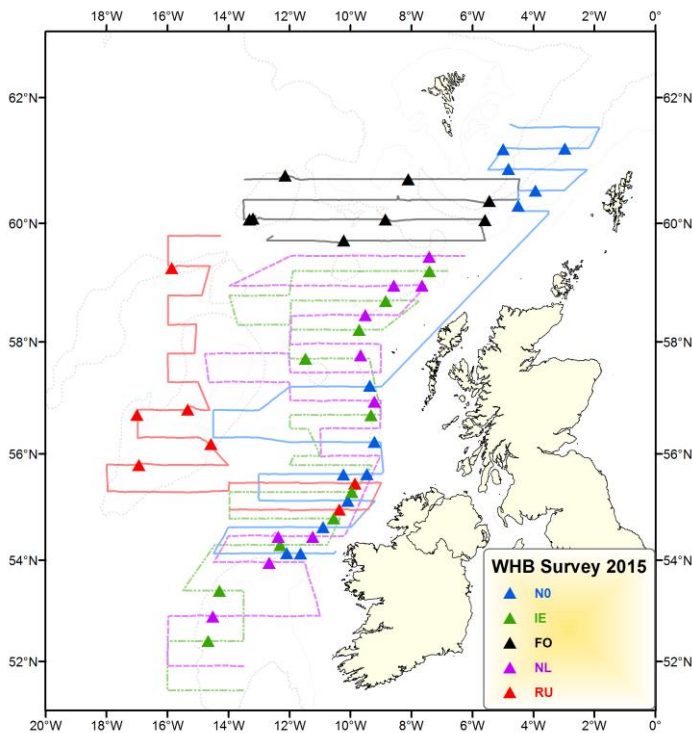
- Target species: Cod, Haddock, Saithe
- Trawl surveys spring and autumn
- Also surveys for redfish and turbot.



Oceanic international collaborative surveys since early 1990's: Pelagic fish & environment



IBWSS



- Target Species:
Blue Whiting
- Countries, Vessel
NL: Tridens
IE: Celtic Explorer
RU: Fridtjof Nansen
NO: G.O. Sars



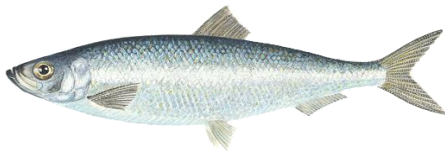
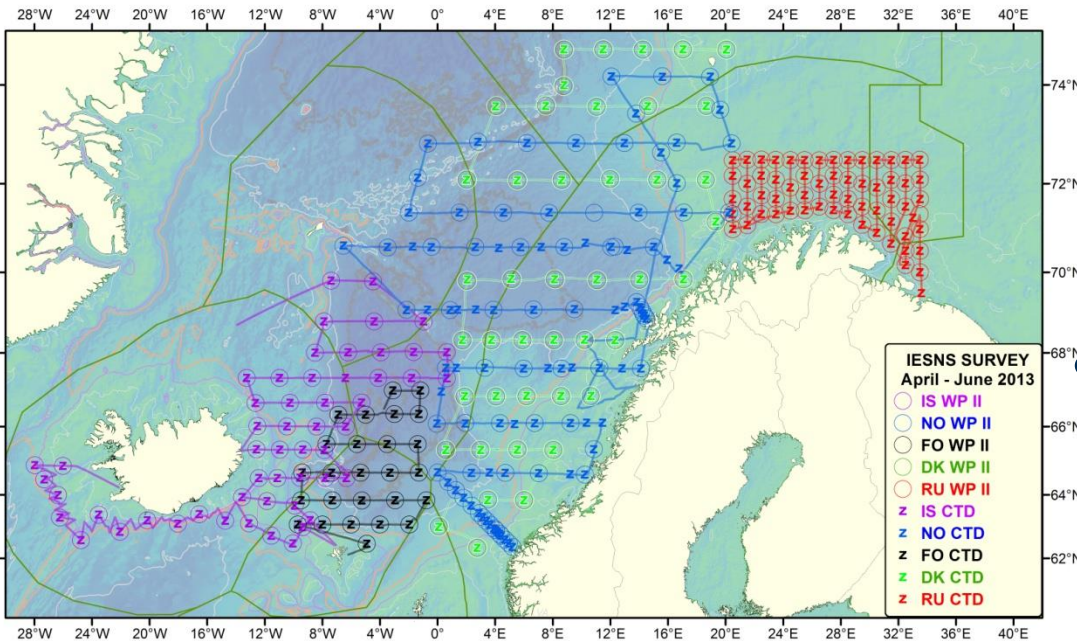
IESNS

- Target Species:

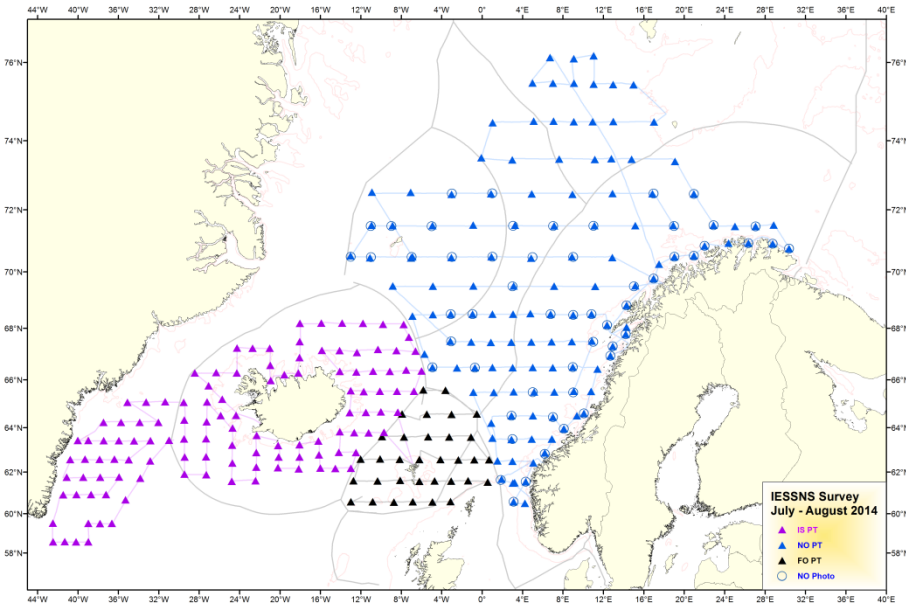
- Herring, blue whiting, (Mackerel)

- Countries, vessels

- IS: Árni Fridriksson
- NO: G.O. Sars
- DK: Dana
- RU: Fridtjof Nansen



IESSNS



- Initiated by NO in 2007, IS and FO following in as MAC stock expanded its feeding area.
- Mainly hired vessels (except IS)



Swept area survey. Mulpelt 832

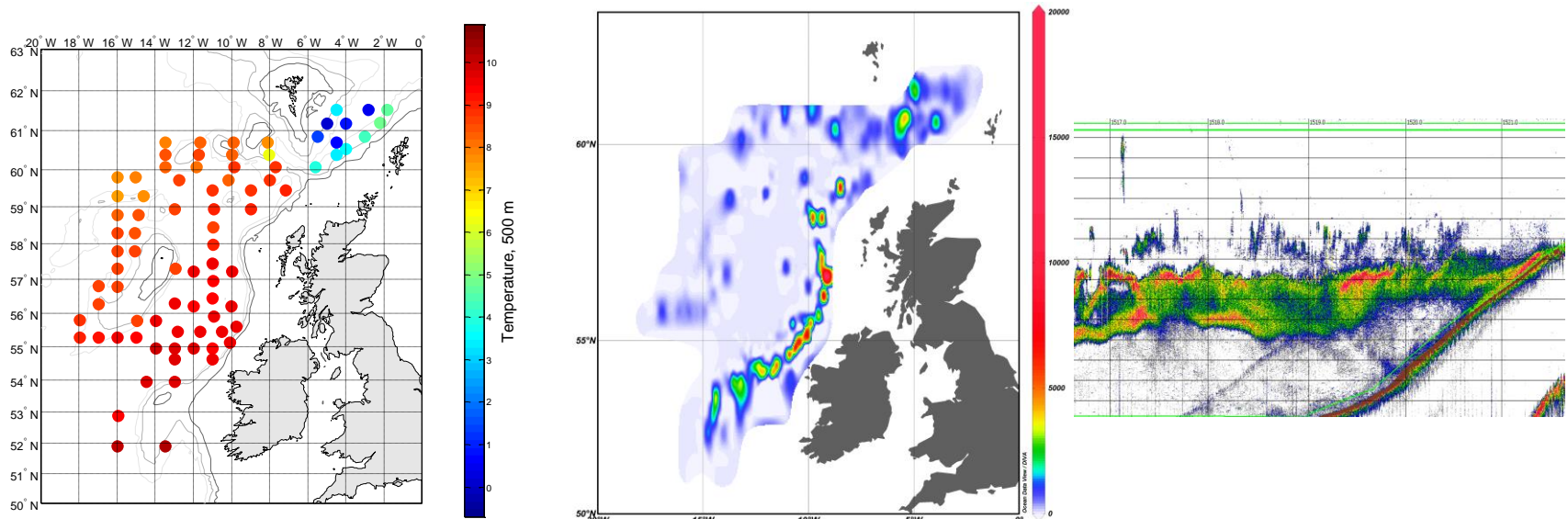
Data collected

- Trawl samples,
catch and biology
- Hydrography
Salinity, temperature, fluorescens ; depth
- WP2 (plankton)
- Acoustics (estimation of stocks)

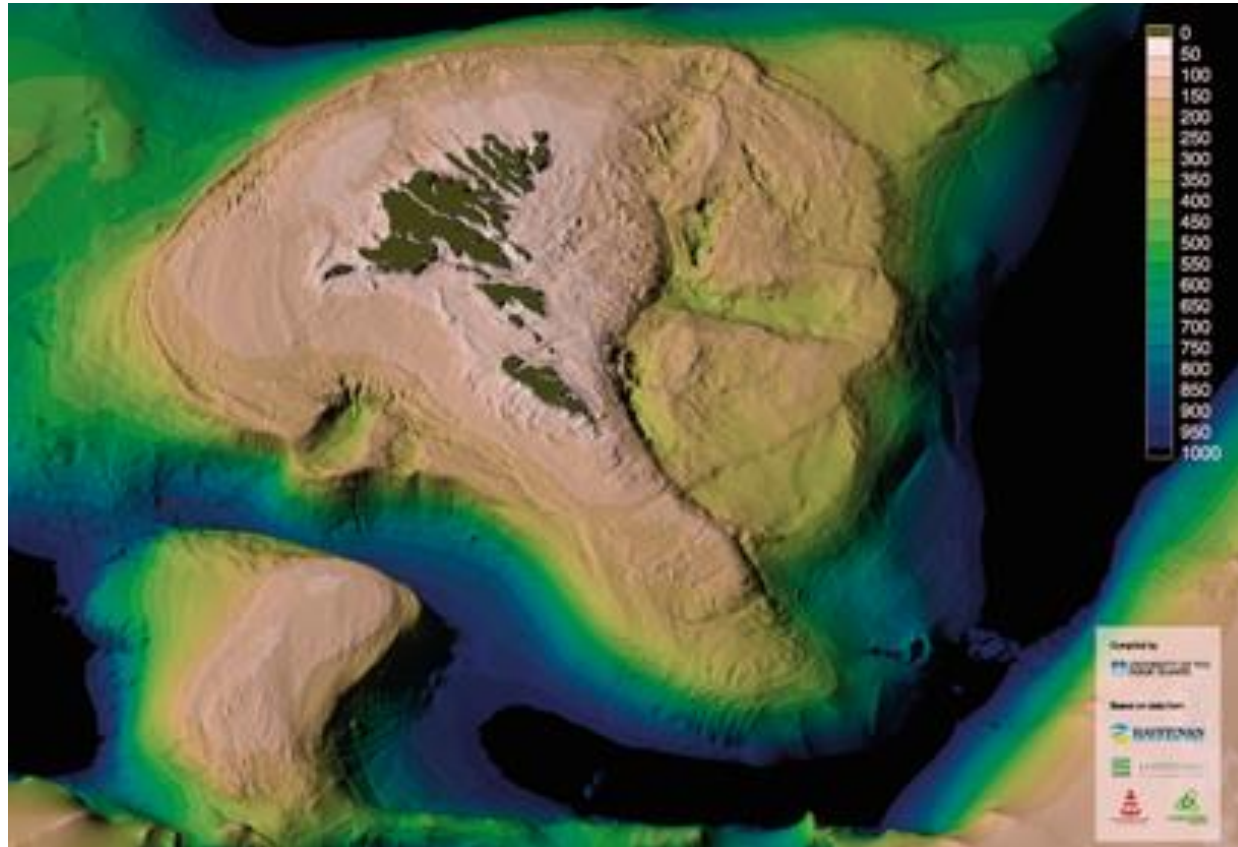
All data stored in the PGNAPES database at FAMRI.

results

- Estimates for all three species.
- Supporting WGWIDE in their efforts to calculate the stock sizes.
- International database as working platform

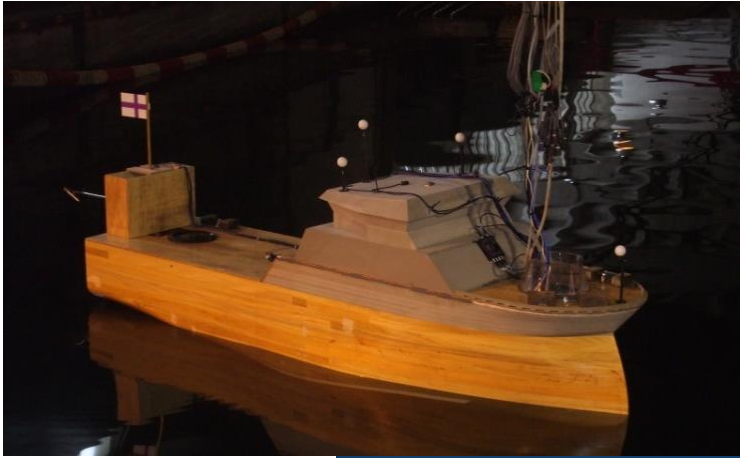


Mapping



What's next

- Main specs.
 - Low running costs.
 - L54 m B 13.6 m
 - ICES 209
 - 13 crew / 12 scientific staff
 - Drop keel
 - DP
- New vessel project
 - 2007 start
 - 2009 stop
 - 2011 go ahead
 - 2012 Project ready
 - 2015 still waiting....



Conclusions:

- Working together equals good results
- All good things takes time. 😊



Thank you for your attention!

Questions?

